

ENGINEERING FOR PEOPLE

DESIGN CHALLENGE

Bringing to life real-world design challenges
in a safe and supported environment.



Inside you will find...



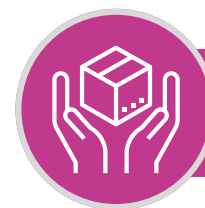
Overview

- The problem
- Introducing the programme
 - What is the challenge?
 - Part of the curriculum
 - The design brief
- Universities involved



Impact

- Feedback from educators
- Feedback from students
- Changes in skills



Our packages



The problem

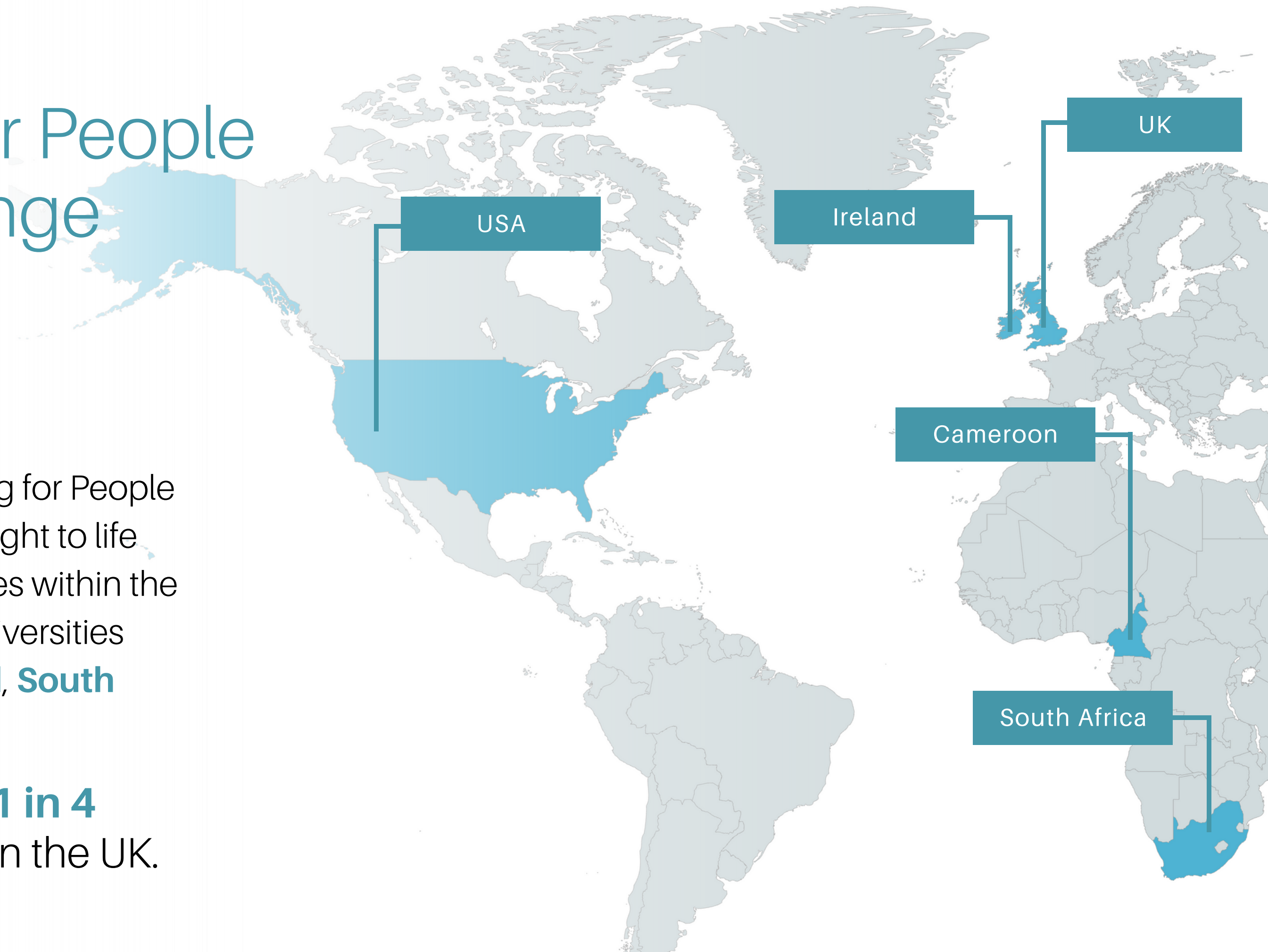
Universities face mounting pressure to provide students with sustainability skills, driven by demand from over 79% of students, employer expectations, a recognised skills gap across industry, and the mandate of AHEP4. Successfully addressing this imperative will not only ensure your institution is helping to meet societal needs but will also enhance your competitiveness in attracting top-tier students.

Our support makes navigating this challenge more achievable.

Introducing the Engineering for People Design Challenge

Since 2011, the Engineering for People Design Challenge has brought to life real-world design challenges within the engineering curricula of universities across **Cameroon, Ireland, South Africa, the UK** and **USA**.

We are now reaching **1 in 4** engineering students in the UK.





The flagship programme takes a **project-learning approach** to support students to broaden their understanding of the impacts of engineering on people and planet.

To date, the challenge has marked the beginning of

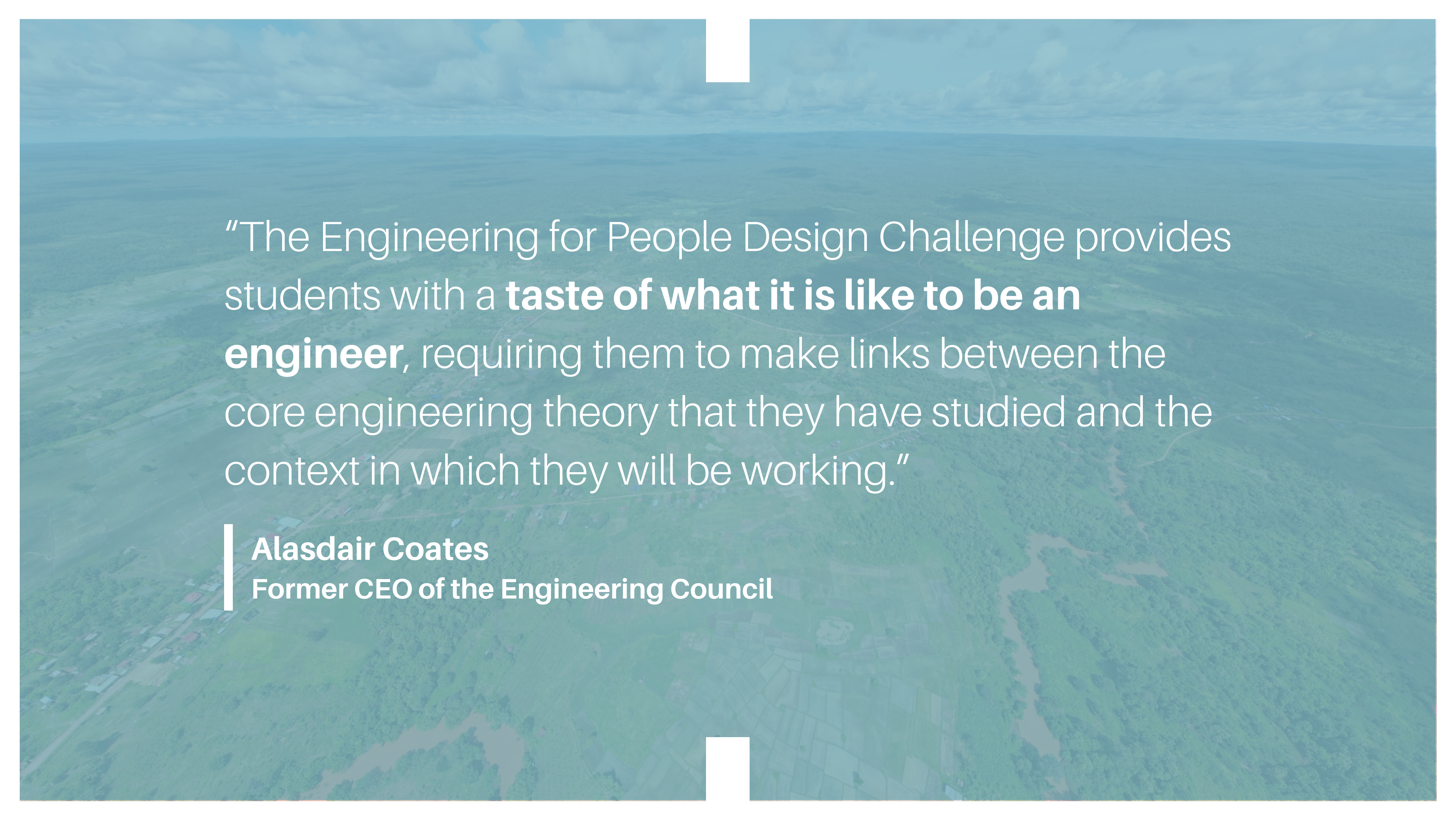
over 70,000

students' journeys to develop the critical skills needed to become globally responsible engineers.

What is the challenge?

In teams, students are asked to address a detailed **real-world design brief** shaped by the insights and reflections of a community. Together, the students work to develop a solution to engineering specific challenges facing the partner community.



An aerial photograph of a lush green landscape, possibly a rural area with fields and some buildings, is shown. The image is overlaid with a semi-transparent blue filter. There are two white rectangular bars: one at the top center and one at the bottom center.

“The Engineering for People Design Challenge provides students with a **taste of what it is like to be an engineer**, requiring them to make links between the core engineering theory that they have studied and the context in which they will be working.”

Alasdair Coates

Former CEO of the Engineering Council



Part of the curriculum

We work with educators to run the Engineering for People Design Challenge as part of the curriculum for Foundation, first and second year undergraduates, making it a **mandatory part of the degree course**.

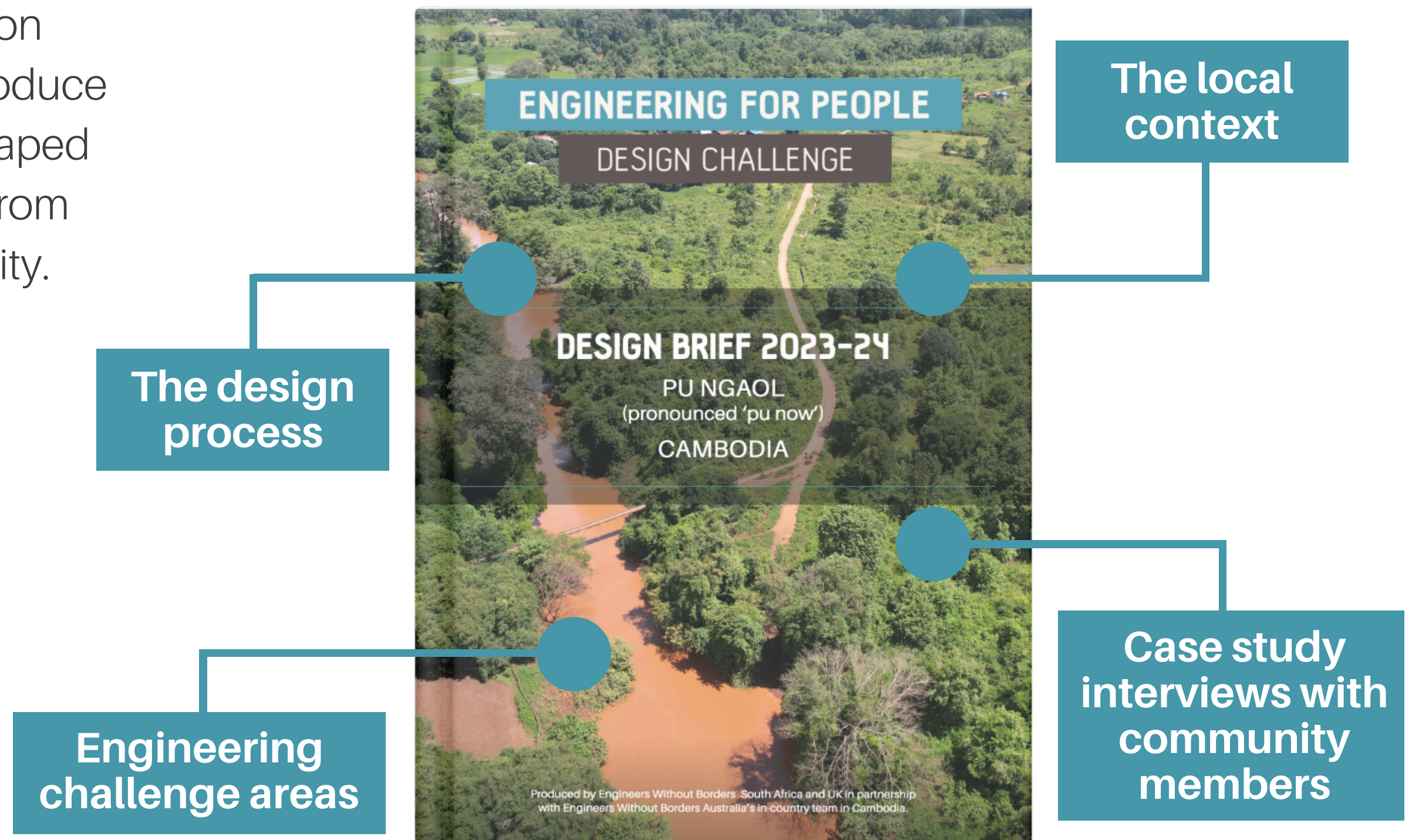
In the UK, the initiative contributes to the Engineering Council Accreditation of Higher Education Programmes (i.e. AHEP4) by requiring multidisciplinary teams of students to demonstrate an understanding of the design process and broaden their awareness of the economic, legal, social, ethical and environmental implications of engineering, alongside technical skills.

Interested in participating with a Master's cohort? Get in touch at **challenge@ewb-uk.org**.

The design brief

Each design brief contains detail of...

Every year, we work in collaboration with a **community partner** to produce a real-world design brief that is shaped by insights and reflections taken from interviews with the local community.



Explore this year's challenge



46 universities

around the world are
delivering the design
challenge in 2023/24.



University of Brighton



**Sheffield
Hallam
University**

**Colorado
State
University**



THE UNIVERSITY
of EDINBURGH

**KING'S
College
LONDON**



THE UNIVERSITY OF
WARWICK



UNIVERSITY OF WISCONSIN
STOUT
WISCONSIN'S POLYTECHNIC UNIVERSITY



Logos from the 40 participating universities in Ireland, the UK and USA.

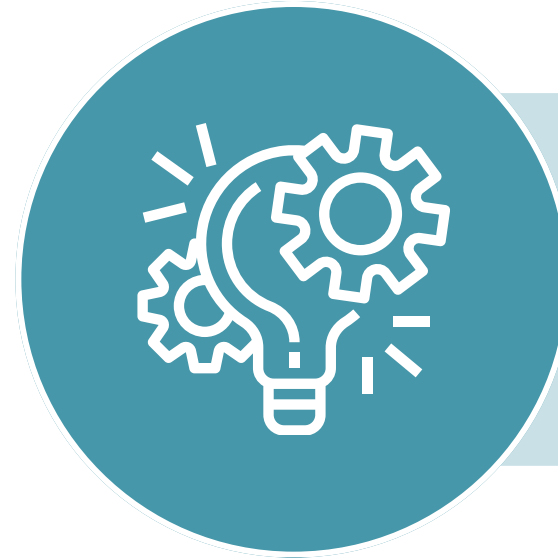
Discover the impact

We take our impact seriously.

Explore impact data from years of surveys, interviews and focus groups to understand why our university partners continue to deliver the challenge.



Every educator we've interviewed agrees that the programme is **good value for money** - why?



Project-based learning enhances the **learning experience** for educators and students



Tutors and students benefit from a multidisciplinary and multicultural **community of learning**



Our **resources are valued**, especially for their global dimension and real-world examples



“The Engineering for People Design Challenge provides the opportunity for students to look at how to solve **real problems for real people** using their engineering skills.”

Educator
Aston University

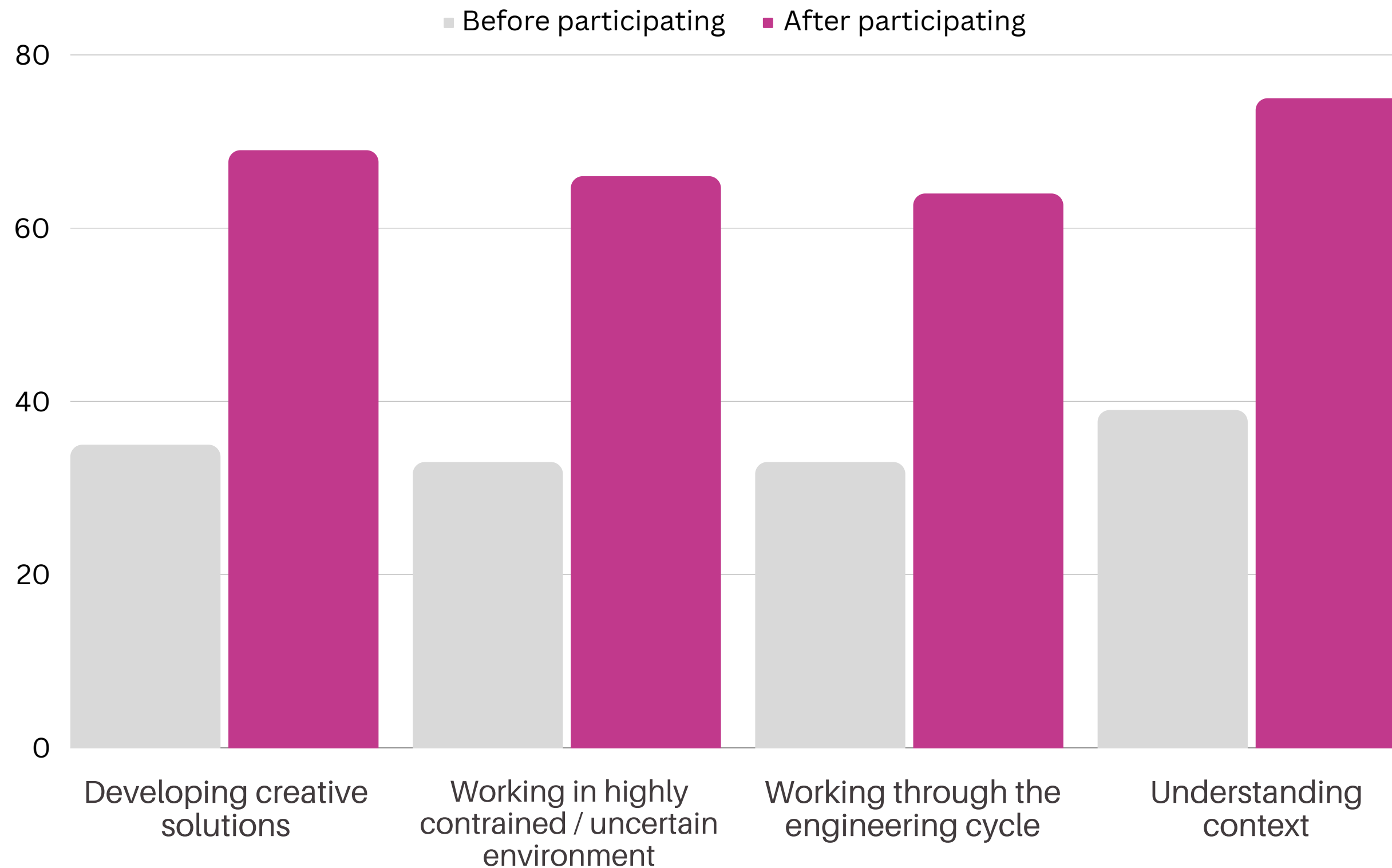


93%

of students believe that the design challenge has broadened their understanding of the importance of globally responsible engineering

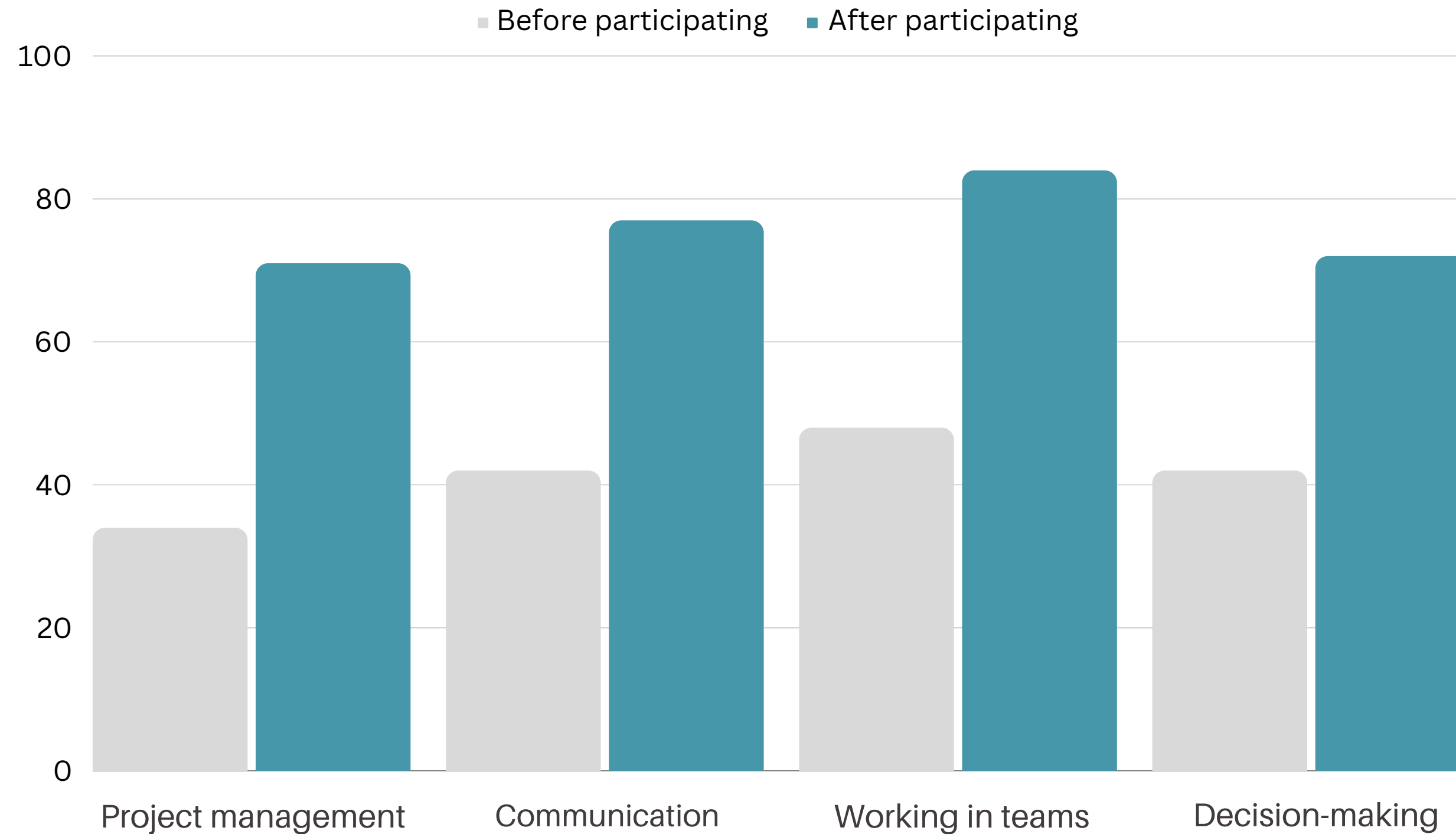
Changes in engineering skills

(self-rated as above average or excellent)



Changes in other essential skills

(self-rated as above average or excellent)



A photograph of three students sitting around a table, looking at a laptop. The laptop lid is covered in various stickers, including 'MLH', 'Deso', 'Signals & Threads', and 'CRAFT'. The image has an orange overlay and white text. There are white L-shaped decorative elements at the top and bottom center.

"You, as an individual, have the ability to create ideas that have a resounding impact on other people.

It was a mindset change to see that we are actually engineering now. We have relevance and our ideas are relevant ... we have value and influence in the engineering sector ... and we haven't even got to the end of our degree!"

Student at Strathclyde University
Focus group participant

Our packages



Find out what's included in each package in more detail on the next page.

Early Bird Essentials - £4,000

Sign up before September 2024 and save 20% on our Essentials package.

Essentials - £5,000

Everything you need to deliver the design challenge, including launch resources and a virtual workshop facilitated by our team.

Bespoke Face-to-Face* - £5,000+

Including all of the above, as well as a bespoke in-person Launch Lecture and workshop. You will also receive bespoke educator training.

All prices are exclusive of VAT.

* For the bespoke face-to-face- package - geography, number of students and supporting educators will impact the cost and delivery of the session(s).

Included in our packages

Core content	Essentials	Bespoke
Design Brief	✓	✓
Launch Lecture (Self-directed)	✓	✓
Online Educator Briefing	✓	✓
Video Case Study Interviews	✓	✓
Student Forum Access	✓	✓
Virtual workshop facilitated by EWB-UK	✓	✓
Submission, review and feedback of top designs*	✓	✓
Invite to in-person Grand Final	✓	✓
Storytelling Workshop for finalists	✓	✓
People's Prize online showcase for finalists	✓	✓

* 5 teams per university, with at least 1 team progressing to the Grand Final as a finalist.

Additional student workshops	Essentials	Bespoke
Launch lecture in-person*	£	✓
Bespoke workshop in-person*	£	✓
Latter stage 'solutions' workshop (live, online)	£	✓

Additional educator support	Essentials	Bespoke
Bespoke Educator Training (Online), linked to Competency Compass and/or Reimagined Degree Map **	£	✓

* For the bespoke face-to-face package - geography, numbers of students and supporting educators will impact the cost and delivery of the session(s).

** You can find out more about our Competency Compass and Reimagined Degree Map at www.ewb-uk.org.

With thanks to our partners

To ensure we can continue to deliver this impactful programme, we have partnered with organisations that share our commitment to ensuring a safe and just future for all.

Explore all of our strategic partnerships.



Jacobs



Spirax-Sarco Engineering plc

To learn more about how your university could
get involved in this impactful programme, please
contact us at challenge@ewb-uk.org.

Thank you!

